

# About the TFR Website

The Temporary Flight Restrictions (TFR) Website provides a source to review TFR data for flight planning purposes. The site offers a consistent look and feel, enhanced design, and improved functionality implemented from approved TFR requirements.

A TFR is a type of Notice to Air Missions (NOTAM) that defines an area restricted to air travel due to a hazardous condition, a special event, or a general warning for the entire FAA airspace. The text of the actual TFR NOTAM contains the fine points of the restriction.

## TFR List Help

The Temporary Flight Restriction (TFR) List page allows users to view scheduled NOTAM data for TFRs. The List Page lists all active or future TFRs issued, with some summary information. The page provides dropdown lists to search for specific TFRs shown by Center, State, or Type. The detail of the TFR can be viewed by clicking on the TFR, which will open the Details Page.

**Federal Aviation Administration** NOTAM Search SUA About

Open TFR Map

Total Records: **5** Data as of: **Wed, 24 Aug 2022 14:52 UTC**

Date	NOTAM	Facility	State	Type	Description	Zoom
08/03/2022	2/7141	ZLA	CA	SECURITY	Coyote Wells, CA, Sunday, August 07, 2022 through Saturday, September 03, 2022 Local	
07/28/2022	2/7127	ZHU	TX	VIP	HOUSTON, TX, Thursday, July 28, 2022 UTC	
07/27/2022	2/7119	ZOB	OH	SECURITY	CLEVELAND, OH, Wednesday, July 27, 2022 through Sunday, August 28, 2022 UTC	
07/27/2022	2/7121	ZBW	VA	SECURITY	RESTON, VA, Wednesday, July 27, 2022 through Sunday, August 28, 2022 UTC	
07/07/2022	2/8266	ZTL	GA	VIP	ATLANTA, GA, Friday, July 8, 2022 through Monday, July 18, 2022 UTC	

This site is informational in nature and is designed to assist pilots and aircrews for flight planning and familiarization. It may be used in conjunction with other pre-flight information sources needed to satisfy all the requirements of 14 CFR 91.103 and is not to be considered as a sole source of information to meet all pre-flight action. Due to system processing delays, recently entered notams may not be displayed

U.S. Department of Transportation  
Federal Aviation Administration  
800 Independence Avenue, SW  
Washington, DC 20591  
1-866-TELL-FAA (1-866-835-5322)

Web Policies  
Web Policies & Notices  
Privacy Policy  
Accessibility

Government Sites  
USA.gov  
Plainlanguage.gov  
Regulations.gov  
Data.gov

Contact Us  
Customer Support:  
1-866-466-1336  
Email: 7-AWA-NAIMES@faa.gov

## Navigation Tabs

Use the **Open TFR Map** on the left of the page to navigate to the **TFR Map** page which displays TFR NOTAM data in a graphical map format.

## Total Records

Lists the number of records displayed in the TFR List. Will be updated when filter TFR NOTAM data.

## Data As Of: Information

---

The **Data as of:** field displays the date and time in Zulu of the most recent update of the data listed. To verify the latest TFR data, contact the United States NOTAM Service (USNS) NOTAMS that expire will be removed in near real-time.

## Column Data

---

The TFR data is displayed within the following column headers. It may be sorted or filtered to display specific data and then downloaded as needed using the TFR List in JSON or XML and select 'Download'

**Date** – List of dates when the TFR NOTAM was issued

**NOTAM** – List of Temporary Flight Restriction NOTAM IDs

**Facility** – List of center IDs or facilities associated with specific NOTAMS



**State** – List of states in the United States and other scheduling territories (Guam and Puerto Rico)

**Type** – Type of Temporary Flight Restrictions include:

- AIRSHOW
- HAZARDS
- SECURITY
- SPACE OPERATIONS
- SPECIAL
- VIP

**NOTE:** HAZARDS include 91.137(a)(1) HAZARD (surface hazard), 91.137(a)(2) HAZARD (wildfires, disaster relief) and 91.137(a)(3) HAZARD (restrict sightseeing), 91.138 HAZARD (Hawaii)

**Description** – List of TFR NOTAM summaries for each NOTAM which may include the city, state, start/end date and/or time.

**Zoom** – Displays a magnifying glass icon  for each NOTAM which opens the corresponding TFR image within the TFR Map and a text icon  to open the NOTAM text in a pop-up window.

## Sort Data

---

All columns containing text may be sorted by selecting the column header or clicking the arrow to the right of the column header name.

Once selected, the grey arrow will be changed to black to indicate the current sort order of ascending or descending. Click again to change the order.

## Filter Data

---

To filter column data by Type, Center or State, select a value within the corresponding dropdown menu. Once chosen, the site will drill down to that specific data. A Search box is also provided for free text search values.

**NOTE:** Selections must be cleared to reset the TFR List or select a new value to change the data displayed.

## Download Data

---

To create a file of the TFR data for downloading, select the **TFR List in JSON** or **TFR List in XML** located in the left navigation. Once open, select the blue **Download** located at the top of the window and save the file in a local file directory.

```
Download
<?xml version="1.0" encoding="UTF-8"?>
<TFRList>
  <TFR>
    <Date>08/03/2022</Date>
    <NOTAMID>2/7141</NOTAMID>
    <Facility>ZKC</Facility>
    <State>ID</State>
    <Type>VIP</Type>
    <Description>DDDD, ID, Wednesday, August 3, 2022 through Thursday, August 4, 2022 UTC</Description>
    <NotamDetail>https://tfruat.faa.gov/2_7141.html</NotamDetail>
  </TFR>
  <TFR>
    <Date>08/03/2022</Date>
    <NOTAMID>2/7139</NOTAMID>
    <Facility>ZOA</Facility>
    <State>MD</State>
    <Type>VIP</Type>
    <Description>GGGG, MD, Wednesday, August 3, 2022 UTC</Description>
    <NotamDetail>https://tfruat.faa.gov/2_7139.html</NotamDetail>
  </TFR>
</TFRList>
```

## TFR Type Definitions

---

Temporary Flight Restriction (TFR) types as per 14 Code of Federal Regulations (CFR), Section numbers as follows:

### TYPE: **CFR 91.137 Disaster/Hazard Areas - HAZ**

**PURPOSE:** Is the effect of a natural hazard (flood, volcanic eruption, earthquake, or landslide) that affects the environment, and leads to financial, environmental and/or human losses.

Disaster/hazard situations that warrant regulatory measures to restrict flight operations for a specified amount of airspace, on a temporary basis, in order to provide protection of persons or property in the air or on the ground.

### TYPE: **CFR 91.138 Disaster Areas in Hawaii (HI) - HID**

**PURPOSE:** Clarifies the operating requirements for temporary flight restrictions in the vicinity of national disaster areas in the state of Hawaii. This action proposes to change the title of the regulation used to manage aircraft operations near hazard or disaster areas.

**TYPE: CFR 91.141 Proximity of the President and Other Parties - VIP**

**PURPOSE:** No person may operate an aircraft over or in the vicinity of any area to be visited or traveled by the President, the Vice President, or other public figures contrary to the restrictions established by the Administrator and published in a NOTAM.

**TYPE: CFR 91.143 Proximity of Space Flight Operations - SPC**

**PURPOSE:** When a Notice to Airmen (NOTAM) is issued in accordance with this section, no person may operate any aircraft of U.S. registry, or pilot any aircraft under the authority of an airman certificate issued by the Federal Aviation Administration, within areas designated in a NOTAM for space flight operation except when authorized by ATC.

**TYPE: CFR 91.145 Vicinity of Aerial Demonstrations and Major Sporting Events - EVT**

**PURPOSE:** Gives the FAA authority to establish TFRs to protect persons or property on the ground or in the air, to maintain air safety and efficiency, or to prevent the unsafe congestion of aircraft in the vicinity of an aerial demonstration or sporting event.

**TYPE: CFR 99.7 Special Security Instructions - SEC**

**PURPOSE:** Each person operating an aircraft in an Air Defense Identification Zone (ADIZ) or Defense Area must, in addition to the applicable rules of this part, comply with special security instructions issued by the Administrator in the interest of national security, pursuant to agreement between the FAA and the Department of Defense, or between the FAA and a U.S. Federal security or intelligence agency.

## **TFR Details**


---

The details of a TFR may be viewed by selecting a TFR NOTAM number listed in the NOTAM column for the TFR. When selected, the TFR Details page opens. The Details contain the actual text of the NOTAM along with the graphic of the TFR, if a TFR shape is available.

Users may view the entire NOTAM text in a pop-up window by selecting **Open NOTAM Text**.

Users may view the NOTAM text in XML and AXIM, or its shape file using the blue Download links provided in the left menu. When click **Download Shape File**, a zip file of the shape data will be downloaded to the user's local Downloads folder.

**NOTE:** The Details window may be minimized to view more of the map by selecting the left edge of the details window and dragging it to the right.


**Federal Aviation Administration**
NOTAM Search SUA Ab

Open TFR List


Open TFR Map

Open NOTAM Text

Download Shape file

Download XML file

Download ADM file

Map Panel 

**LAYERS** [Legend](#)

Measure

ARTCC Centers

Airport (5)

Nav aids (5)

Boundaries

Base maps:

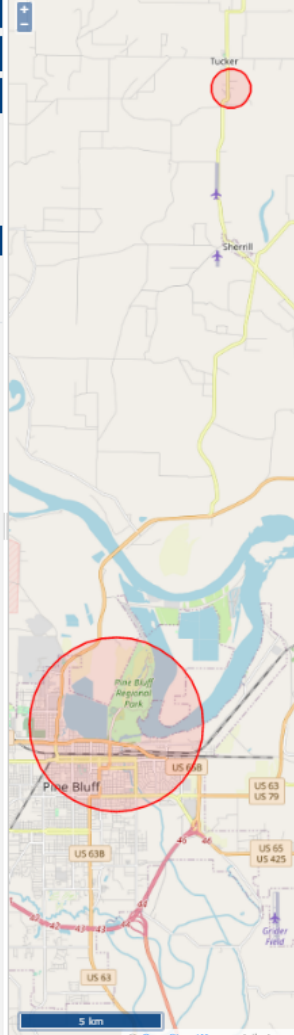
VFR Sectional (8)

IFR Low Sectional (8)

IFR High Sectional (8)

World Topo Map

Open Street Map



**NOTAM Number :** FDC 2/7867

Issue Date : August 26, 2022 at 2112 UTC

Location : Memphis, Jackson, Mississippi

Beginning Date and Time : August 26, 2022 at 0230 UTC

Ending Date and Time : August 27, 2022 at 0645 UTC

Reason for NOTAM : Temporary flight restrictions for VIP Movement

Type : VIP

Replaced NOTAM(s) : N/A

**Affected Area(s)**

**Area A**

**Airspace Definition:**

Center: On the PINE BLUFF VOR/DME (PBF) 255 degree radial at 3.6 nautical miles. (Latitude: 34°14'07"N, Longitude: 91°56'46"W)

Radius: 1.6 nautical miles

Altitude: From the surface up to and including 17999 feet MSL

**Effective Date(s):**

From August 26, 2022 at 0230 UTC

To August 26, 2022 at 1030 UTC

**Area B**

**Airspace Definition:**

Center: On the PINE BLUFF VOR/DME (PBF) 349 degree radial at 11.4 nautical miles. (Latitude: 34°28'06"N, Longitude: 91°57'13"W)

Radius: 0.4 nautical miles

Altitude: From the surface up to and including 17999 feet MSL

**Effective Date(s):**

From August 27, 2022 at 0445 UTC

To August 27, 2022 at 0645 UTC

**Operating Restrictions and Requirements**

No pilots may operate an aircraft in the areas covered by this NOTAM (except as described).

EXC AS SPECIFIED BLW AND/OR UNLESS AUTH BY ATC IN CONSULTATION WITH THE AIR TFC SECURITY COORDINATOR VIA THE DOMESTIC EVENTS NETWORK (DEN):

A. ALL ACFT OPS W/ THE 10NM RADIUS AREA(S) LISTED ABV, KNOWN AS THE INNER CORE(S), ARE PROHIBITED EXC FOR: APPROVED LAW ENFORCEMENT, MIL ACFT DIRECTLY SUPPORTING THE UNITED STATES SECRET SERVICE(USSS) AND THE OFFICE OF THE PRESIDENT OF THE UNITED STATES, APPROVED AIR AMBULANCE FLIGHTS, AND REGULARLY SCHEDULED COMMERCIAL PAX AND ALL - CARGO CARRIERS OPR UNDER ONE OF THE FOLLOWING TSA - APPROVED STANDARD SECURITY PROGRAMS / PROC AND ARE ARR INTO AND / OR DEP FM 14 CFR PART 139 AP: ACFT OPR STANDARD SECURITY PROGRAM(AOSSP), FULL ALL - CARGO ACFT OPR STANDARD SECURITY PROGRAM(FACAOSSP), MODEL SECURITY PROGRAM(MSP), TWELVE FIVE STANDARD SECURITY PROGRAM ALL CARGO(TFSSP - ALL CARGO), OR ALL - CARGO INTERNATIONAL SECURITY PROC(ACISP). ALL EMERGENCY / LIFE SAVING FLT(MEDICAL / LAW ENFORCEMENT / FIREFIGHTING) OPS MUST COORDINATE WITH ATC PRIOR TO THEIR DEP AT XXX - XXX - XXXX TO AVOID POTENTIAL DELAYS.

**Other Information:**

ARTCC: ZME - Memphis Center

Authority: Title 14 CFR section 91.141

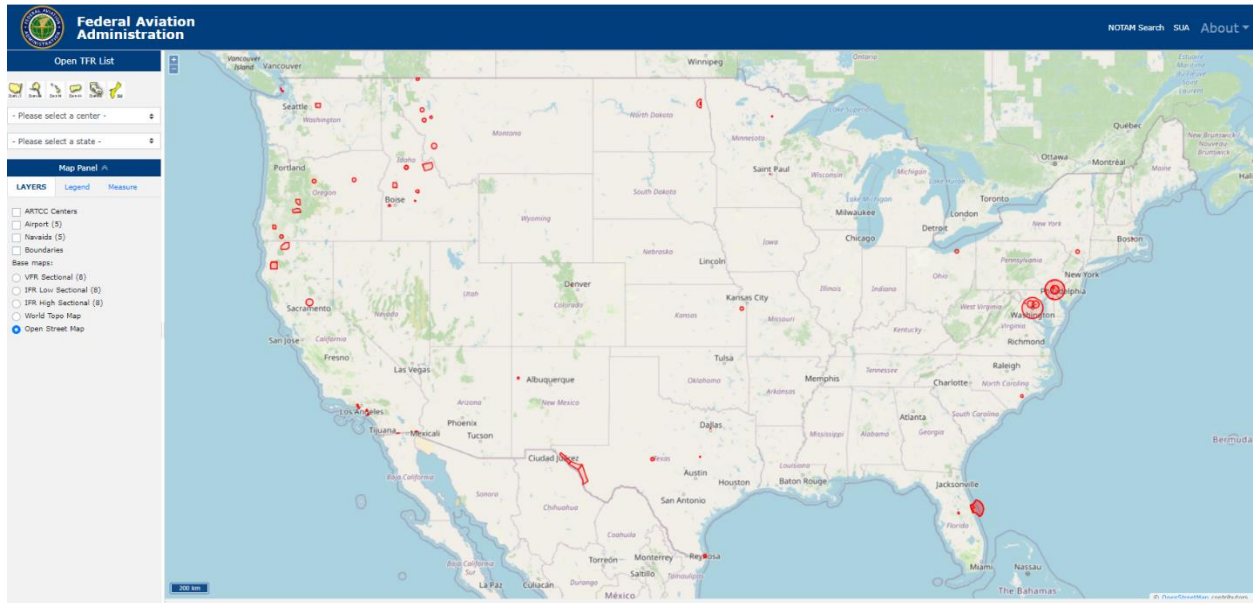
## TFR Map Help

The Graphic Map page for the Federal Aviation Administration (FAA) Temporary Flight Restrictions (TFR) Website. This page allows users to dynamically map TFRs adding map layers or using the zoom and pan functionality to customize the map display.

Map layer options appear within the menu located to the left of the map. Some Map Layer options will only display at specific zoom levels as indicated within the menu. Visual Flight Rule (VFR) and Instrument Flight Rule (IFR) sectional charts may be displayed when zoomed to level 8 or 50 km. In addition, users may choose specific TFR types to be displayed within the map for all TFRs.

A user can also select a particular center or state from the corresponding menu list provided to zoom into an area of interest. All centers are labeled and outlined within the map.

To get information for a particular TFR, mouseover the actual TFR shape displayed within the map to view its NOTAM ID.



## Navigation Tabs

Use the **Open TFR List** on the left of the page to navigate to the **TFR List** page which displays TFR NOTAM data in a table format.

## Actions

- Pan** Pan the map using the click and drag functionality to move around the map.
- Zoom In** Select the plus (+) sign within the Zoom tool in the upper left corner of the map to zoom into the map display or double-click within the map to zoom. Navigational aids (NAVAIDs), routes, and intersections are displayed in VFR and IFR sectional charts at lower-numbered zoom levels.
- Zoom Out** Select the minus (-) sign within the Zoom tool in the upper left corner of the map to zoom out of the map display.

## Zoom To Buttons

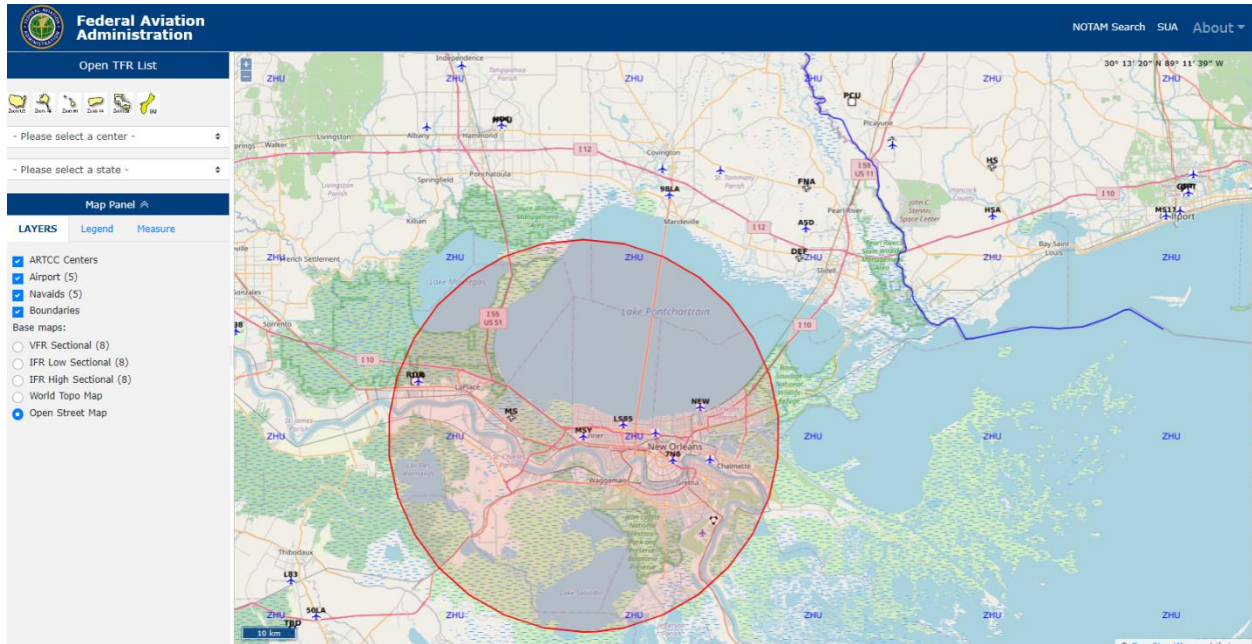
Located to the left of the map is a row of 'Zoom To' buttons that center the map to one of the areas provided. Select the desired button to view one of the following map areas labeled as US (United States), AK (Alaska), HI (Hawaii), PR (Puerto Rico), CR (Caribbean) or GU (Guam).



## MAP PANEL

The Map Panel on the left side of the page contains options to customize the map display using the Layers checkboxes or to gather measurement data using the Measure tools. This panel also contains the Legend for the map display. When one of these map panel options is selected, the label will display in uppercase, bold font.

Multiple layer checkboxes may be selected to display as shown in the following image.



## ARTCC Centers

The **LAYERS** menu allows the user to choose the **ARTCC/Center** checkbox to display the ARTCC/Center boundary lines on the map. The Center ID will also be displayed within the boundaries. To clear the selection, select the checkbox again to remove the layer.

## Airports

The **LAYERS** menu allows the user to choose the **Airports** checkbox to display major or minor airports on the map depicted by an airplane icon. To clear the selection, select the checkbox again to remove the layer.

## NAVAIDS

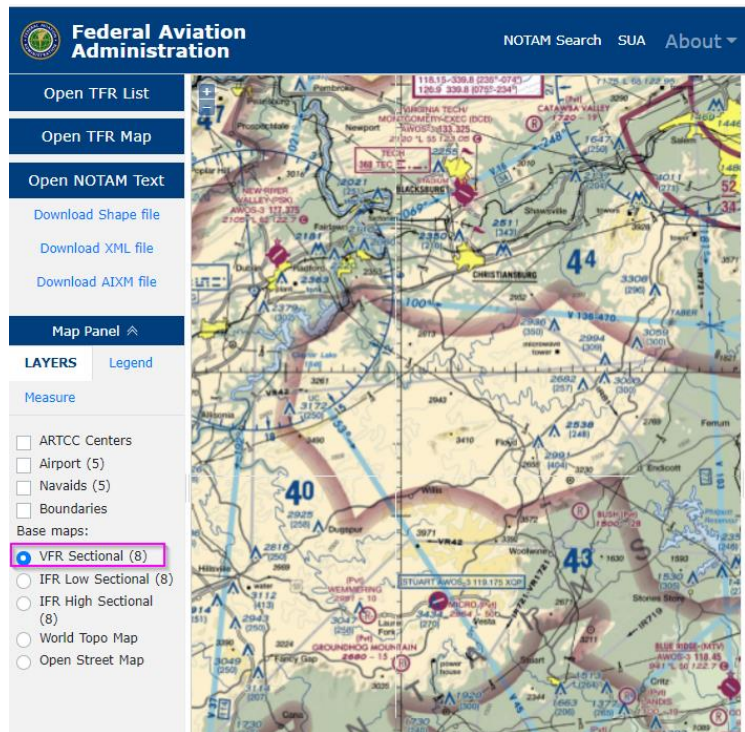
The **LAYERS** menu allows the user to display the available **NAVAIDS** on the map by selecting its checkbox. These will appear as different shapes for each type of NAVAID and display its 3-letter abbreviated name.

## Boundaries

The **LAYERS** menu allows the user to choose the **Boundaries** checkbox to display the political or state/territory boundary lines on the map. To clear the selection, select the checkbox again to remove the layer.

## Base Maps

The **LAYERS** menu allows the user to choose a Base Map radio button to display different map views on the TFR Map: VFR Sectional, IFR Low and High Sectionals, World Topo Map, and Open Street View (default). The VFR and IFR Sectional maps will only display at zoom level 8 or 50 km.



## LEGEND

This **LEGEND** Map Panel option contains the corresponding color for each map layer value displayed on the map such as: NOTAMs, Interstates, Centers, Rivers, Political Boundaries.

## MEASURE ACTIONS

The Map Panel contains Measure actions to be applied to the map. It contains the following actions: Measure Distance and Measure Area.



## Measure Area

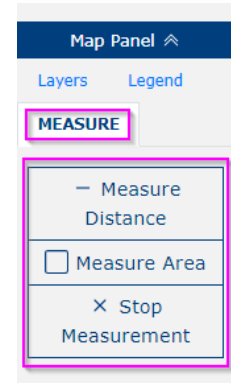
The Measure Area action allows the user to view a calculated area for a specific area on the map.

To use the Measure Area tool, select Measure in the Map Panel and then Measure Area checkbox.

Once selected, place the cursor over the map, click a starting point, and drag the cursor across the map to draw a line to the next point.

Then click again and drag the cursor to another point to draw a specific area on the map.

Double-click to select this point as the end point and calculate the distance in the measurement type selected or single click and drag the line to another point to continue the measurement calculation.



## Measure Distance

The Measure Distance action allows the user to view the calculated distance from one point location on the map to another location or locations.

To use the Measure Distance tool, select Measure in the Map Panel and then Measure Distance checkbox.

Once selected, place the cursor over the map, click a starting point, and drag the cursor across the map to draw a line to the next point.

Click the end point to calculate the distance in the measurement type selected.

Double-click to select this point as the end point or single click and drag the line to another point to continue the measurement calculation.

## Website Links

---

**FAA Links** – Located in the upper section or header of the TFR Website and provides links to external websites as follows:

- **FAA Home** ([www.faa.gov](http://www.faa.gov)) - Federal Aviation Administration
- **NOTAM Search** (<https://notams.aim.faa.gov/notamSearch/>) - Current NOTAM information
- **SUA** ([www.sua.faa.gov](http://www.sua.faa.gov)) – Special Use Airspace Website
- **About** – provides a dropdown menu for the TFR Help and Release Notes

**NOTE:** Selecting the Federal Aviation Administration text and icon within the Website header will also open the FAA homepage.

**NOTE:** To view the website footer, select the arrow provided on the right side within the website disclaimer.

**Government Sites** – Located in the footer within the TFR Website and provides links to external websites as follows:

- **USA.gov** ([www.usa.gov](http://www.usa.gov)) - U.S. government's official Web portal
- **Plainlanguage.gov** ([www.plainlanguage.gov](http://www.plainlanguage.gov)) - The Plain Language Action and Information Network (PLAIN) group Website
- **Regulations.gov** ([www.regulations.gov](http://www.regulations.gov)) - U.S. government federal regulations and other related documentation under development
- **Data.gov** ([www.data.gov](http://www.data.gov)) - Public access to datasets generated by the Executive Branch of the Federal Government

**Web Policies** – Located in the footer within the TFR Website and provides links to FAA policy Websites as follows:

- **Web Policies & Notices** ([www.faa.gov/web\\_policies](http://www.faa.gov/web_policies)) - FAA Web policies and notices
- **Privacy Policy** ([www.faa.gov/privacy](http://www.faa.gov/privacy)) - FAA Privacy and Web Policy
- **Accessibility** ([www.faa.gov/accessibility](http://www.faa.gov/accessibility)) - FAA Accessibility

## **TFR Website Disclaimer**

---

The following disclaimer displays at the bottom of the page: This site is informational in nature and is designed to assist pilots and aircrews for flight planning and familiarization. It may be used in conjunction with other pre-flight information sources needed to satisfy all the requirements of 14 CFR 91.103 and is not to be considered as a sole source of information to meet all pre-flight action. Due to system processing delays, recently entered NOTAMs may not be displayed

## **Contact Information**

---

Contact Federal Aviation Administration at 800 Independence Avenue, SW, Washington, DC 20591.  
Phone: 1-866-TELL-FAA (1-866-835-5322)

Customer Support: Hours of Operation are 24 hours a day, 7 days a week. Phone: 866-466-1336 Email: 7-AWA-NAIMES@faa.gov